



WAVESTAR[®] BCMS HUB

BRANCH CIRCUIT
MONITORING SYSTEM

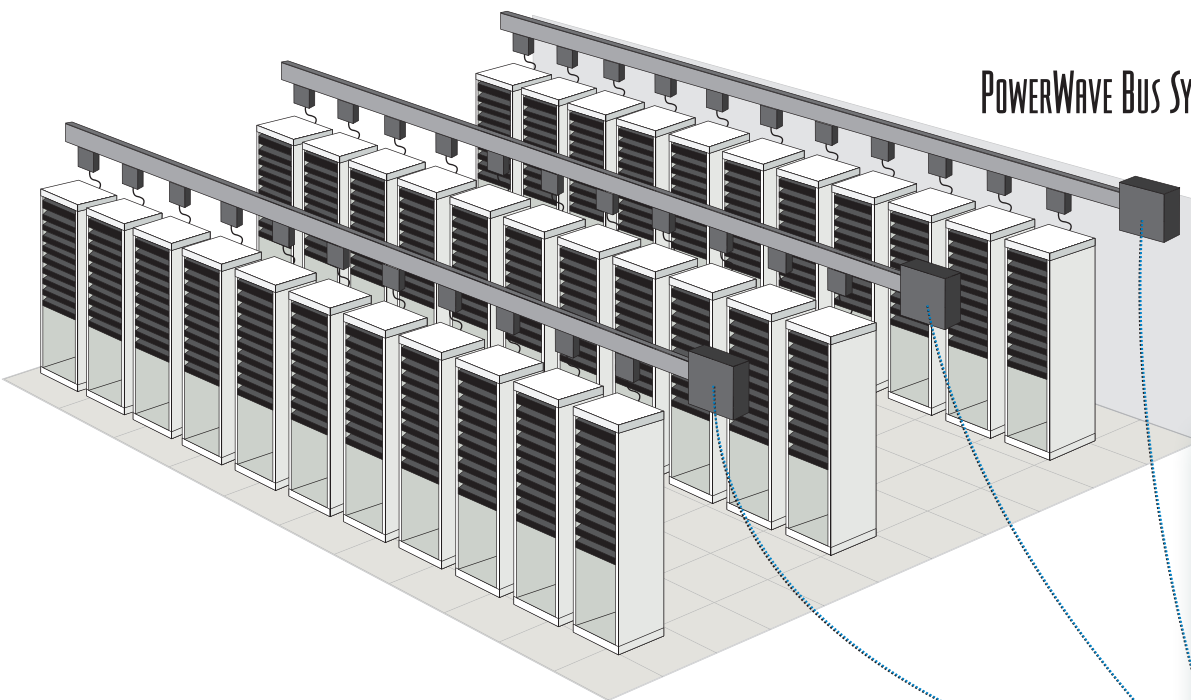
For More Information
Use your QR Reader



COLLECT. MANAGE. AND PERFORM AT THE HIGHEST LEVELS

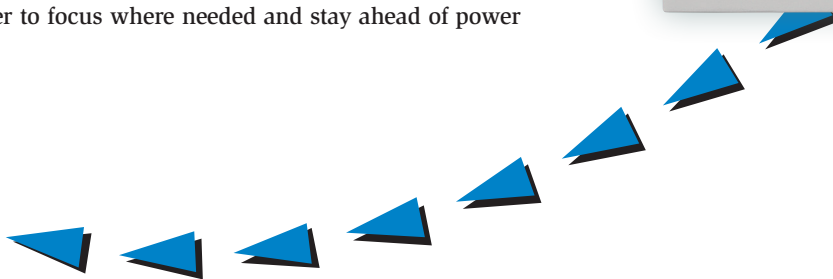
PDI_Q = POWER DISTRIBUTION INTELLIGENCE QUOTIENT
YOUR SMART MONITORING SOLUTION

PowerWave Bus System™

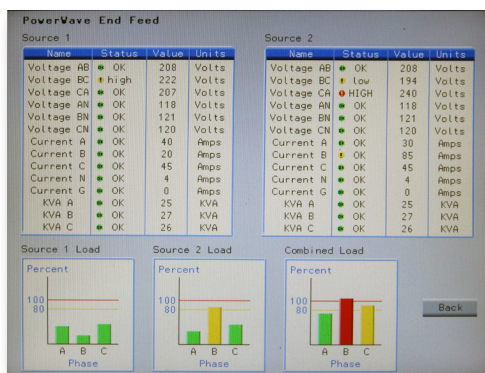


DATA CENTER MANAGERS are tasked each day with collecting and managing a tremendous amount of information on the power architecture that supports the critical loads. Once this information has been gathered, the next step is to interpret the data from the monitoring of each branch circuit or server load by using the PDI® system. The PDI® system gathers power data and slices it into graphs or customized reports. This reporting function allows the data center manager to closely manage server loads real time. PDI has both raised floor and solid floor solutions including containerized modular data centers that employ PDI® to make load management easy. PDI® features WaveStar® monitors and PDI's patented BCMS. The PDI BCMS Hub brings it all together: up to 70 downstream BCMS devices – to your finger tips – and allows the data center manager to focus where needed and stay ahead of power issues before they occur.

COLLECT



MAN



1 ALARM EVENT CAPTURE & LOG

Scroll through Real Time Events Captured On-Screen for Easy Interpretation

2 SNMP INTERFACE SETUP & DRIVER

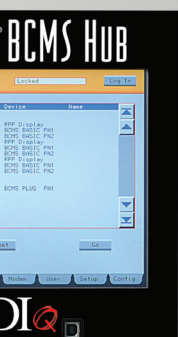
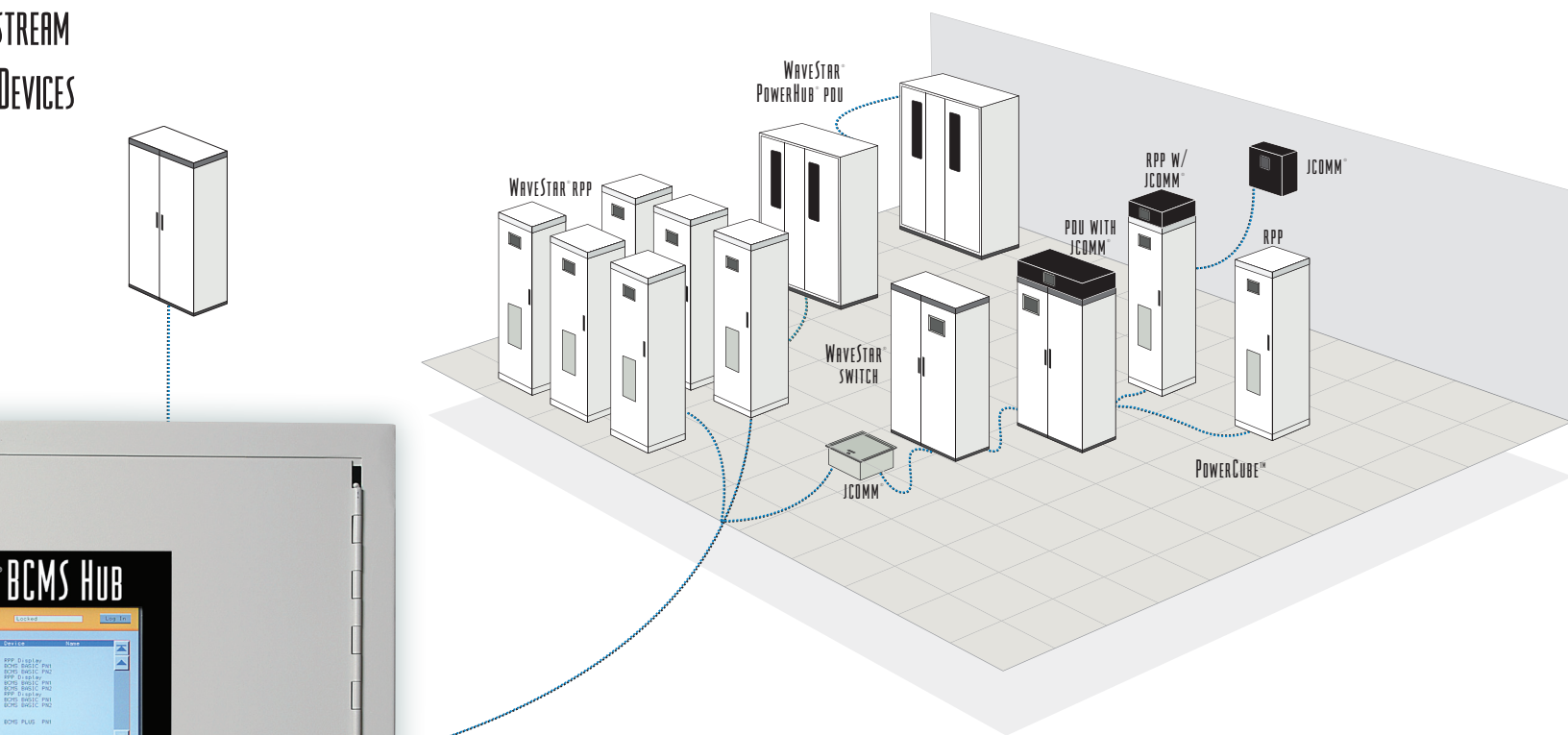
Traps and Reports all Available Points via SNMP to Feed Network

3 ALARM NOTIFICATION

Email, Pager and IP Addressable

4 SECURITY FEATURES

Named Users with Log-In and Password Protection



IP Address Access The PDI BCMS hub can also be accessed via an IP address for real time management of multiple devices over the web.

The standard BCMS hub package also includes:

- Modbus® RTU protocol
- Touchscreen WaveStar® monitor to graphically show each BCMS enabled panel board
- Standard reporting software with exportable Excel files
- Open access to the reporting functions so the site management team can create reports
- Embedded web server IP addressable interface for remote monitoring
- Software that looks at alarms, current and power measurements in real time through TCP / IP connections

AGE

PERFORM



5 PDI STANDARD REPORTS

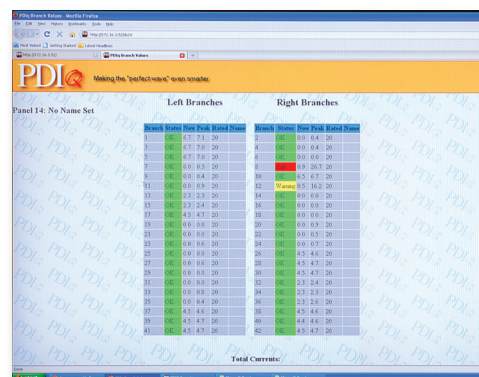
Current Load and Trends

6 EXPORTABLE EXCEL REPORTING

Standard and Customizable Reports

7 BRANCH CIRCUIT GRAPHS & TABULATIONS

By Breaker and Panelboard
Actual, Warning and Alarm Settings Real Time



PDI's new WaveStar® BCMS Hub can collect information from all downstream BCMS-enabled power quality products in a data center. Installation does not have to be inside the data center room.

NUMBER OF BCMS CARDS	NUMBER OF MONITORS
1-35	1
36-70	2

Initial bill of material and PDI service for the WaveStar® BCMS hub includes:

- Modbus® RTU protocol
- Standard enclosure: 24" x 24" x 5" deep
- Local monitor to show all downstream BCMS-enabled power quality product data
- Standard reporting software that has exportable Microsoft Excel files
- IP addressable interface to allow for remote display and collection of BCMS information from a PC
- Software allows end user to look at several different measurements (alarms, voltage, current) in real time
- PDI service: one day of product setup and customer training
- Stand alone system connects to either IP address or to building management system
- Optional Modbus® TCP/IP available

REQUIREMENTS FOR SETUP:

- Pre-wired 120V power
- Installation of enclosure
- Daisy chain / hardware of BCMS

- 1 SEAMLESSLY INTEGRATES UP TO 70 DOWNSTREAM BCMS ADDRESS
- 2 MONITORS, COLLECTS, AND DISPLAYS REAL TIME LOAD INFORMATION
- 3 TOUCH SCREEN INTERFACE PANEL FOR EASY ACCESS TO EACH DEVICE



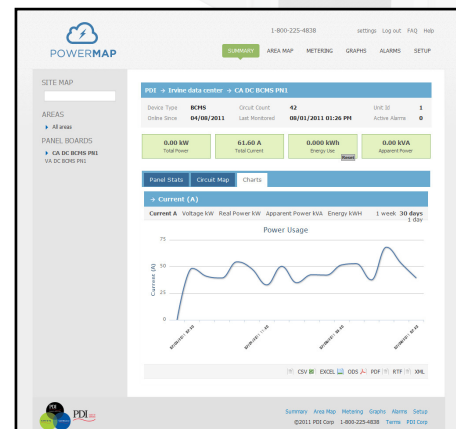
POWERMAP

PDI POWERMAP™

PDI's patented branch circuit monitoring solutions can now be monitored in the cloud with PDI PowerMap™. Accessable through desktop, tablet and mobile smartphones PDI's PowerMap™ enables you to effectively monitor and manage power at the branch circuit no matter where you're located.

FEATURES INCLUDE:

- Real-time power monitoring through Internet connected desktop PCs, Tablets and Smartphones
- Advanced, customizable and exportable graphs enabling you to plot and review all power points.
- Truly manage load balancing with PowerMap's easy to understand graphs.
- Unique login and password credentials protects your sensitive power data.
- Easy upgrade. PowerMap resides in the cloud thus there are no software upgrades to install nor manage.
- Hardware can be installed on most any RPP, PDU or Switch.



smiths interconnect

Power Distribution, Inc. | 4200 Oakleys Court | Richmond, VA 23223
800.225.4838 | 804.737.1703 fax | web site: www.pdicorp.com

©PDI 03/12